

成為台灣人

# 吃早餐

Be a  
Taiwanese  
Eat Breakfast

Jul. 2024

南西商圈

NANXI DISTRICT

大稻埕

DADAOCHEUNG

#風格早午餐地圖・雙語版獨家發行

今日特餐

當在地生活遇上外旅凝視

「又潮又台，  
凝聚在地生活者和  
旅者的立體誌。」

台北特色商圈  
● 大稻埕慈聖宮 ● 永樂市場 ● 雙連早市  
等超過25間在地早午餐一手掌握！

大稻埕  
慈聖宮

Cisheng Temple in Dadaocheng



超特別濃郁系湯頭  
Renowned for its rich and special broth.  
許仔豬腳湯  
Xu's Pig Trotter Soup

許仔豬腳



台灣早餐小知識  
Fun Fact  
密度世界冠軍！  
截至2023年全台早餐店  
營業登記數量近19,000間，  
比起同期便利商店家數高出近1.4倍  
The Highest Density of Breakfast Stores around the World!  
Taiwan had nearly 19,000 breakfast stores in 2023,  
outnumbering convenience stores by 40%.

已持續營業數十年、台北市內非常稀有的廟口美食街，其中不乏二代到三代的攤販，廣受國內外遊客青睞，更是各國知名雜誌如POPEYE的推薦熱點。

Nestled within Taipei's rare Temple Street Food Market, some stalls have been serving delicious treats for decades and across two to three generations, drawing both locals and international tourists alike. Some have even been featured in renowned magazines like POPEYE.



魷魚標  
Squid Biao



阿桂姨  
原汁排骨湯  
Aunt A-Guei's  
Pork Rib Soup



葉家肉粥  
Yejia Meat Porridge

招牌是紅燒肉！  
Try out its signature braised pork!

慈聖宮：媽祖廟—台北市大同區保安街49巷17號  
Cisheng Temple: No. 17, Ln. 49, Dalong St., Datong Dist., Taipei City  
營業時間：約9:30-13:30 Around 9:30 AM - 1:30 PM

Traditional

Taiwan



全球獨家24小時營業  
60/70年代全白風靡棒球，國民熬夜追賽的  
宵夜早餐需求讓一間24小時早餐店誕生！  
24-Hour Breakfast Stores: Only in Taiwan!  
Taiwan's 1960s-70s baseball craze fueled all-night viewings, sparking the creation of 24-hour breakfast stores to serve late-night fans.

企鵝文肉羹店  
Penguin Wen Thick Pork Soup



鴉片粥  
Opium Porridge

鴉片意指「好吃到會上癮」  
So good it's "addictive"!

Shuanglian Market

雙連市場



文昌宮  
Wenchang Temple



燕山湯圓  
Yanshan Dumplings

獨家豬肝湯圓  
Exclusive pork liver dumplings.



建國潤餅  
Jianguo Spring Rolls

此早市已近百年歷史，以台北文昌宮成為中心，向外發展而成為市場聚落，周邊住宅、醫院與商辦的大量人流讓周邊的早餐選擇更加豐富。  
Centered around the Wenchang Temple, Shuanglian Market developed into a bustling community market. The high foot traffic from surrounding residences, hospitals, and offices provides a rich variety of breakfast options.

文昌宮—台北市中山區民生西路45巷9號  
Wenchang Temple—No. 9, Ln. 45, Minsheng W. Rd., Zhongshan Dist., Taipei City  
營業時間：約7:30-14:00 Around 7:00 AM - 2:00 PM

台灣人知道「Tainan」當你便秘的時候，台灣人都會叫你去喝早餐店奶茶，因為會讓你相當順暢！  
Feeling constipated? Fetch a milk tea at a Taiwanese breakfast store, and you're good to go!

超過100年歷史的永樂市場目前以布業批發與加工為主，1樓美食街提供豐富的食材與各式生熟食品項，周邊街區因香火鼎盛的霞海城隍廟發展出大量傳統小吃。  
With a history spanning over 100 years, Yongle Fabric Market now focuses primarily on fabric wholesale and processing. The first-floor food court offers a rich array of food ingredients and a variety of fresh and cooked food items. The bustling neighborhood surrounding the vibrant Xiahai City God Temple has developed a plethora of traditional snacks, making it a foodie's paradise.



丸隆生魚行 Wan Long Sashimi Shop

從未停止排隊的店家  
Famous for its never-ending queues.



好粿緣 Hao Guo Yuan

芝麻草仔粿(左)/紅龜粿(右)  
Herbal Rice Cake with Sesame (Left) / Turtle-Shaped Rice Cake (Right)



蔡迪化街古早味蚵嗲

Tsai's Dihua Street Traditional Oyster Fritters

# 永樂市場



Yongle Fabric Market

林合發油飯店 | 超過130年的超人氣傳統美食

Lin He Fa Glutinous Oil Rice | A traditional favorite with over 130 years of history.

台北市大同區迪化街一段21號 捷運北門站

No. 21, Sec. 1, Dihua St., Datong Dist., Taipei City Beimen MRT Station

營業時間：約7:00-17:00 Around 7:00 AM - 5:00 PM

## 世界美食總匯 World Food Hub (Shijie Meishi Zonghui)

24小時不打烊，還有近200種廣受台灣人喜愛的熱門早餐品項任君挑選，宵夜時段總是高朋滿座的神奇早餐店！

Offering non-stop 24-hour service, this incredible breakfast spot features nearly 200 popular Taiwanese breakfast items to choose from. Always packed with customers, even during late-night hours!



地址：台北市大同區歸綏街187號  
No. 187, Guisui Street, Datong District, Taipei  
營業時間：24小時  
24 Hours

## 尚雯早餐 Shangwen Brunch

超乎想像的價格與份量讓它成為街區最受歡迎的早餐店！國際化的老闆甚至提供日文與英文的菜單。

Known for its unbeatable prices and portions, Shangwen Brunch is the most popular breakfast spot in the neighborhood! The store even provides menus in Japanese and English to cater to international visitors.



蔬菜蛋餅  
Vegetable Taiwanese Egg Pancake

兩種獨門辣醬  
Two Signature Hot Sauces



台式香辣 Taiwanese Hot Sauce

泰式酸辣 Thai Hot Sauce



牛肉炒麵  
Beef Stir-Fried Noodles

## 尚雯早餐

地址：台北市大同區長安西路231號  
No. 231, Chang'an West Road, Datong District, Taipei  
營業時間：5:30-13:30 (周日公休)  
5:30 AM - 1:30 PM (Closed on Sundays)

## 丸本丸 Wanbenwan Rice Ball / Rice Noodle Soup

以宜蘭為主題，將在地食材如鴨賞、牛肚與傳統紫米飯糰結合，也提供同樣來自宜蘭的米粉羹，為地區居民帶來多元飲食選擇。

Featuring ingredients from Yilan, local delicacies like smoked duck and beef tripe are combined with traditional purple rice balls. The store also offers rice noodle soup, bringing diverse dining options to the community.



密西羹  
Mixigen (Miki Thick Soup)

丸本丸  
Wanbenwan



鴨賞烏青飯糰  
Smoked Duck and Purple Rice Ball

地址：台北市大同區重慶北路一段62之19號  
No. 62-19, Section 1, Chongqing North Road, Datong District, Taipei City  
營業時間：7:30-13:30 (周四公休)  
Around 7:30 AM - 1:30 PM (Closed on Thursdays)

# 嶼木 islandwood | 自由明亮的飲食場域 | A Bright and Free Culinary Sanctuary

受訪者：店長 Verna  
Interviewee: Verna, Store Manager

抱著「想要重現在日本旅行時難忘的印度料理」的純粹心情，主理人在台灣新冠肺炎最嚴峻、禁止內用的時期反其道而行，著手打造屋齡已屆60的老屋，以印度烤餅與手工漢堡排為主打餐點，為台北車站後方的巷弄重新帶來不分國籍的活潑人氣。

Driven by a pure desire to recreate the unforgettable Indian cuisine experienced during travels in Japan, the owner took a bold step during Taiwan's strictest COVID-19 lockdown period, transforming a 60-year-old house into a culinary hotspot. Specializing in Indian naan and handmade burger patties, Islandwood brings a vibrant, international vibe to the alleys behind Taipei Main Station.

保留原始建築的紅磚與磨石子地  
We preserve the building's original features such as red brick and terrazzo flooring.



# 耳目一新

A Refreshing Take on Brunch!



- ① 焦糖洋蔥加倍肉排漢堡
- ② 烤蔬菜佐鷹嘴豆泥沙拉 (附烤餅)
- ③ 香料鷹嘴豆酪梨捲

- ① Caramelized Onion Double Patty Burger
- ② Roasted Vegetable and Chickpea Salad (comes with naan)
- ③ Spiced Hummus and Avocado Wrap



有別於市面常見的漢堡風味，主理人遵循自然飲食習慣，從每日手揉烤餅、手打肉餅皆不假手他人，更著重溫和使用香料，搭配獨立烘焙坊開發帶有濕潤口感、支撐醬汁重量且不易塌陷的獨家漢堡包。

Distinct from common burger flavors, the owner follows natural eating habits, personally crafting daily naan and burger patties, with a focus on mild spice usage. Collaborating with an independent bakery, they developed a signature burger bun that maintains moisture, supports the weight of sauces, and resists collapsing.



地址：台北市中山區華陰街26號  
No. 26, Huayin Street, Zhongshan District, Taipei City  
營業時間：09:00-16:30 (周五-週日至17:00)  
09:00 AM - 04:30 PM (Fridays - Sundays till 17:00)

# TAKEFIVE Delicatessen | 健康飲食的搖籃 | The Cradle of Organic Eating

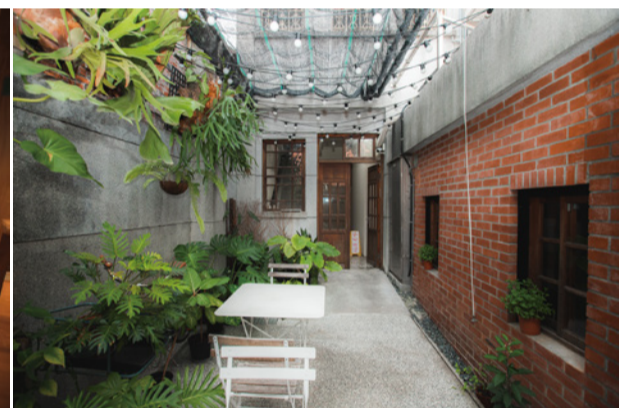
受訪者：品牌經理 Joyce  
Interviewee: Joyce, Brand Manager

五方食藏青田創始店以雜貨結合 Fine Dining 概念鼓勵以健康為導向的地中海系飲食。營業10年後從永康商園移師大稻埕古蹟開設第3間分店，初期以workshop及快閃形式經營，希望提供新銳廚師舞台新穎頭角。

TAKEFIVE's original Qingtian store promotes a healthy Mediterranean diet with groceries. After a decade, they moved from the Yongkang commercial area to open their third store in the historical district of Dadaocheng. Initially operating through workshops and pop-ups, they aim to provide a stage for emerging chefs to showcase their talents.



2樓和全球首座雜誌圖書館boven合作打造餐飲雜誌閱讀空間。  
On the second floor, in collaboration with the world's first magazine library, boven, we've created a unique dining and magazine reading space.



假日農夫大早餐  
Weekend Farmer Hearty Breakfast

店內使用的手作茶杯  
出自主理人之手



The handmade tea cups used in the store are made by the manager.



莓果法國吐司  
French Toast with Berries



地址：台北市大同區迪化街一段202號  
No. 202, Section 1, Dihua Street, Datong District, Taipei City  
營業時間：10:00-19:00 (周一-周二公休)  
10:00 AM - 7:00 PM (Closed on Mondays and Tuesdays)

極度重視「透明產地飲食文化」的主理人，透過「產地拜訪與密切聯繫」台灣農友，更以品牌冷藏車確保食材品質，店內每一樣食材與每一處細節皆能看見台灣品牌的力度，包含風乾熟成肉品的「乾熟工廠」、「慶錫牧場」的放牧雞蛋等以嚴謹態度挑選的食材。

The owner places great emphasis on "food culture with transparent origins". By visiting and collaborating with Taiwanese farmers, and using our refrigerated trucks to ensure ingredient quality, every detail in the store reflects the strength of Taiwanese brands. This includes dry-aged meats from the "Dry-Aged Foods Factory" and free-range eggs from "Qingchang Ranch", all selected with the utmost care.

# 在台東京饕客 Tatsuya 引路 ⇒ 雙連

Tokyo Foodie Tatsuya's Guide to Taiwan ⇒ Shuanglian

雙連街區美食林立，包含在地攤販與新穎餐廳，是我享受美食、品嚐咖啡和散步的理想場所！

Shuanglian District is nothing short of a foodie haven, featuring both local street vendors and trendy new restaurants. It's my go-to spot for enjoying delicious meals, savoring coffee, and taking leisurely strolls!

阿德雷得咖啡  
鬧中取靜的歐式隱藏版咖啡廳，享受店主精選的精品咖啡。

Adelaide Cafe  
A hidden gem with a European vibe, offering premium coffee selected by the owner.

台北市中山區錦州街4巷3號  
No. 3, Ln. 4, Jinzhou St., Zhongshan Dist., Taipei City



双福食品  
1945年開業超過70年的老字號麵包店

Shuangfu Foods  
A historic bakery founded in 1945, with over 70 years of tradition in classic pastries.

台北市大同區民生西路152號No. 150號  
No.150 No. 152, Minsheng W. Rd., Datong Dist., Taipei City

うまい!  
三角形△>長方形□

阿田麵  
1950年創業的陽春麵名店

A Tian Noodles  
A renowned noodle shop established in 1950.

台北市大同區赤峰街44巷20號  
No. 20, Ln. 44, Chifeng St., Datong Dist., Taipei City



うまみ  
味道像是日本的鹽拉麵!

## Tatsuya

來自東京常駐台北的美食、飯店為題創作超人氣旅遊影片。



A foodie hailing from Tokyo, Tatsuya now resides in Taipei and creates popular travel videos centered around Japanese and Taiwanese cuisine and hotels.



著作《台灣名店137》收錄137間讓人感動、美味的台灣店家

His work, *Taiwan's Top 137 Stores*, features a collection of 137 touching and delicious Taiwanese eateries.



# Supranormal Bakery Cafe | 精粹澳式日常 | The Essence of Aussie Everyday Life

受訪者：店長Pan  
Interviewee:  
Pan, Store Manager

來自天母、在赤峰街開幕未滿一年就成為南西商圈炙手可熱的早午餐熱點，主理人夫妻受澳洲飲食文化深刻影響，渴望以自然食材傳達「將一天營養濃縮在一盤」的澳式日常，尤其專注在可頌口味的呈現，從酥脆度、內部蜂巢結構到原料配方，經過十數次調整直至最理想的樣貌。

Originally from Tianmu, Supranormal Bakery Cafe became a trending brunch hotspot in the Nanxi commercial district within just a year of opening on Chifeng Street. The husband-and-wife team behind it is deeply influenced by Australian culinary culture, striving to convey the idea of "condensing a day's nutrition into one plate" using natural ingredients. They focus particularly on croissant flavors, perfecting the crispiness, internal honeycomb structure, and ingredient formulations through numerous adjustments to achieve the ideal result.



打破常規，跳脫自我  
Beyond the world, be Supranormal



①



②



杏仁可頌 Almond Croissant

- ① 熱辣蝦仁嫩蛋可頌
- ② 楓糖培根大早餐 (自選可頌)
- ① Spicy Shrimp & Soft Egg Croissant
- ② Maple Bacon Hearty Breakfast (including choice of croissant)

地址：台北市大同區赤峰街71巷27號  
No. 27, Lane 71, Chifeng Street, Datong District, Taipei City  
營業時間：09:00-18:00 (周一公休)  
9:00 AM - 6:00 PM (Closed on Mondays)

店名來源為超正常 (Supernormal) 這個進化學理論，認為吃美味、高品質的食物是一件再正常不過的事；而將自身以愛研製的餐點呈現給兼具文藝與新潮的熱區商圈，更是一個充滿挑戰的新鮮碰撞。

The name is inspired by the word "Supernormal", describing an evolutionary theory that believes enjoying delicious, high-quality food is perfectly normal. Bringing our lovingly crafted dishes to a trendy, artsy hotspot is an exciting and challenging endeavor.

# Waku Waku Burger わくわく | 台日混血的美味產物 | A Delectable Fusion of Taiwanese and Japanese Flavors

2020年開幕於誠品生活南西5+F書店挑空夾層，主理人認為建物特色需與品牌調性相互融合，巧妙延續誠品書店自戲院舊址遺留的穹頂造型與沉穩色系，裝潢以高雅白色與拱門設計為主題，搭佐木質家具、精巧燈飾與綠植，彰顯空間生機。

Opened in 2020 on the mezzanine level of eslite spectrum nanxi 5+F bookstore, the owner believes the building's unique features should complement the brand's style. The elegant white decor and arch designs, along with wooden furniture, delicate lighting, and greenery, highlight the vitality of the space, cleverly incorporating the dome shape and calm tones from the bookstore's cinema heritage.



把握早午餐及定食為主符合廣大族群喜好的優勢，在市場獨特性與大眾接受度之間找到平衡，以「台灣在地食材×日式料理手法」打造獨家招牌菜色，讓各國旅客品嚐到小農生菜與雞肉的美味。

By focusing on brunch and set meals to cater to a wide audience, Waku Waku Burger strikes a balance between market uniqueness and broad appeal. Their signature dishes, crafted with "Taiwanese local ingredients X Japanese culinary techniques", allow travelers from around the world to savor the flavors of smallholder farm vegetables and chicken.



炸洋蔥富士山牛肉堡  
Deep Fried Onions Fujisan  
Beef Burger



南蠻唐陽雞定食  
Nanban Karaage  
Chicken Set Meal

所有成品  
從零到有全部自製！  
Everything here is  
homemade from  
scratch!

受訪者：店長Kaka  
Interviewee: Kaka, Store Manager

地址：台北市中山區南京西路14號5+F (誠品生活南西)  
5AF., No. 14, Nanjing W. Rd., Zhongshan Dist., Taipei City (eslite spectrum nanxi)  
營業時間：11:00-22:00 (周五 - 周六至22:30)  
11:00 AM - 10:00 PM (Friday - Saturday to 22:30)

南西 | 境外旅客專屬優惠  
eslite spectrum nanxi | Overseas Tourists Special Offers



# 美食自媒體創辦人Charlene引路 ⇒ 大稻埕

Charlene's Guide To a Culinary Gem ⇒ Dadaocheng

**佳興魚丸店**  
1950年從路邊攤起家的經典魚丸店

**Jiaxing Fish Ball Shop**  
A classic fish ball shop that started as a roadside stall in 1950.  
台北市大同區延平北路二段210巷21號  
No. 21, Ln. 210, Sec. 2, Yanping N. Rd., Datong Dist., Taipei City

**杜甲A-Ma**  
亞洲首間以辣椒為主的香料概念店

**DoGa A-Ma**  
Asia's first spice concept store that focuses on chili.  
台北市大同區迪化街一段159號  
No. 159, Sec. 1, Dihua St., Datong Dist., Taipei City

**江記華隆**  
手工肉乾紮實香濃

**Jiang Ji Hua Lung**  
Known for its handmade meat jerky with a rich and intense flavor.  
台北市大同區迪化街一段311號  
No. 311, Sec. 1, Dihua St., Datong Dist., Taipei City



**賣麵炎仔**  
台北市歷史最悠久的麵店之一

**Mai Mian Yan Zi**  
One of Taipei's most historic noodle shops.  
台北市大同區安西街106號  
No. 106, Anxi St., Datong Dist., Taipei City



大稻埕擁有豐富文化遺產和獨特老街風情，承載著無數動人的故事，值得放慢腳步、細細品味。

Dadaocheng is rich in cultural heritage and unique old street charm, filled with countless touching stories. It's a place to slow down and savor every moment.

## Charlene Yang

旅居美國、台灣兩地，是指標性美食平台Taipeiater的發起人。



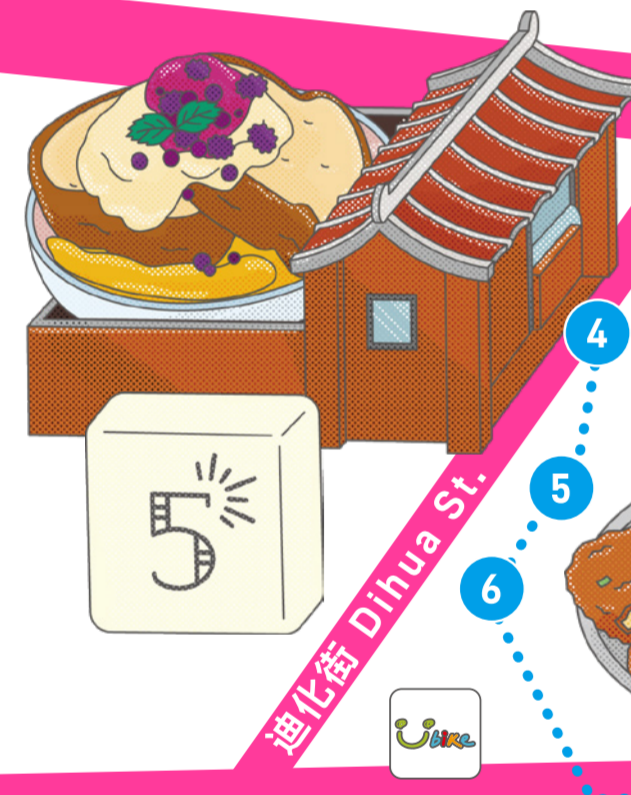
Splitting her time between the US And Taiwan, Charlene is the founder of the influential food platform Taipeiater.



Innovative Brunch Spots Competing for Your Tastebuds!  
百家爭鳴的新穎早午餐

# 格風 地早 圖午 餐

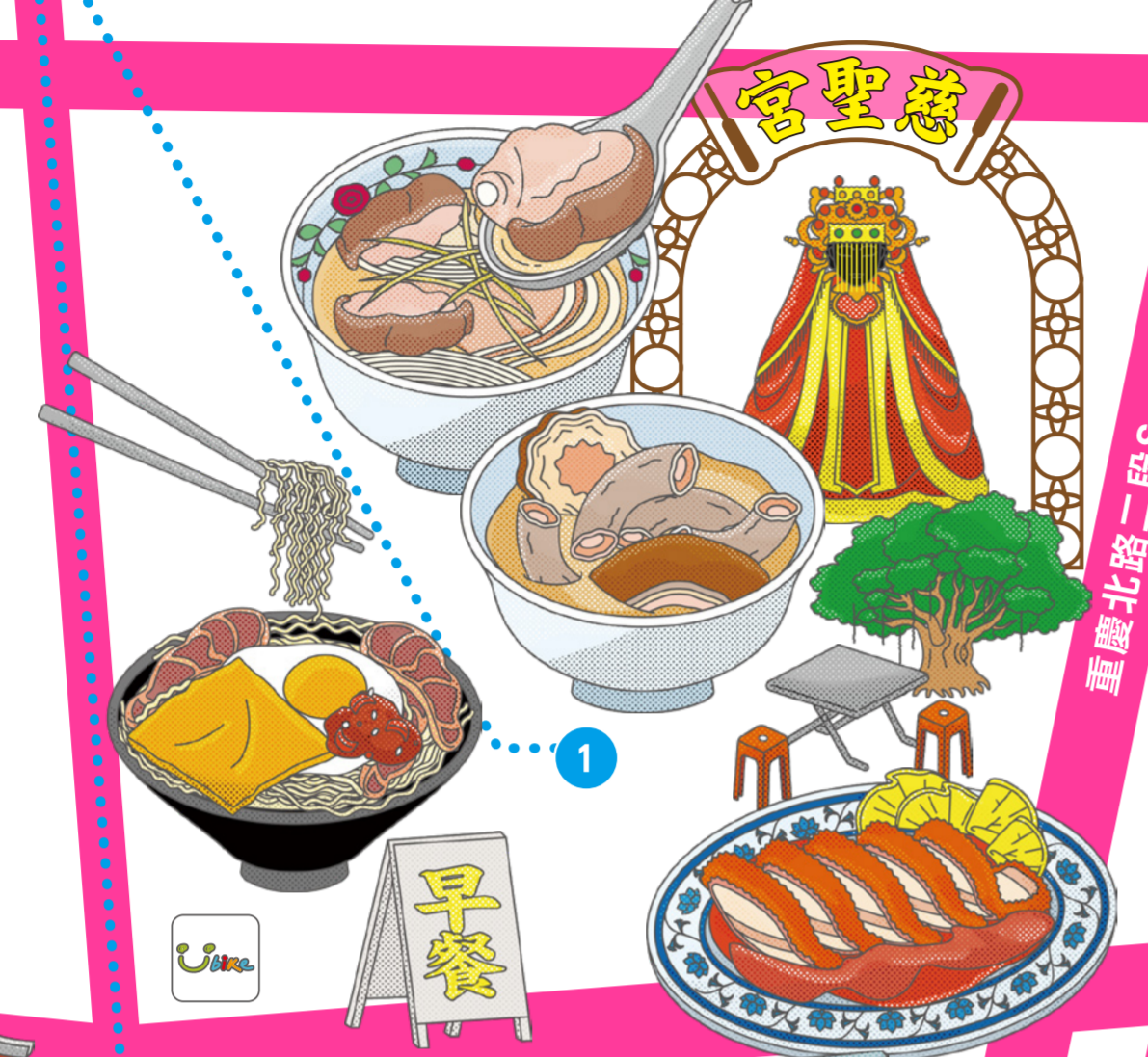
Stylish  
Brunch  
Map



看完整 Google 地圖資訊  
See These Spots on Google Maps!

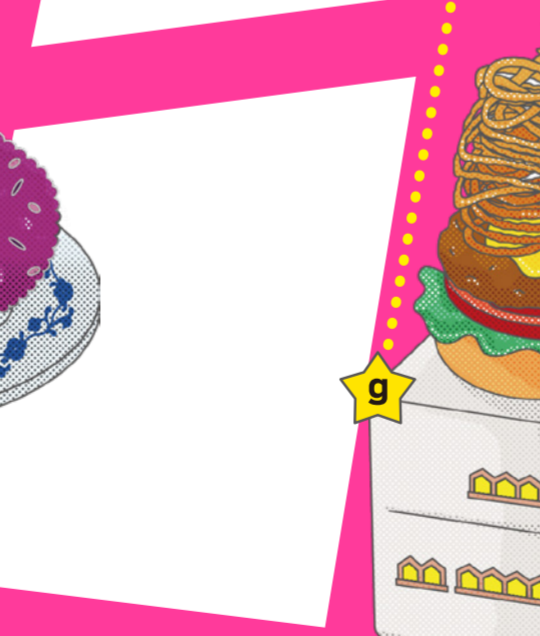
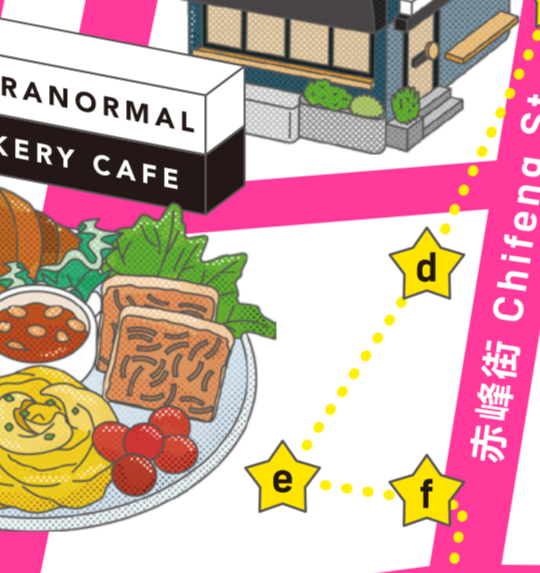
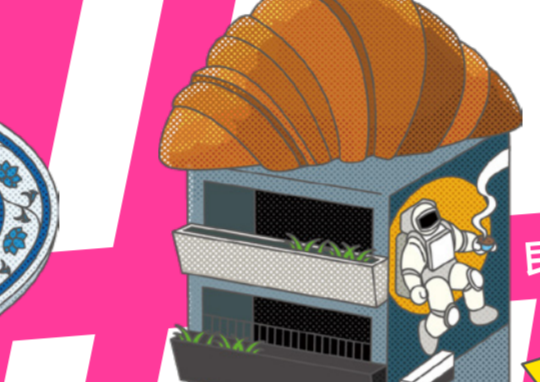


延平北路二段272巷 No. 272, Sec. 2, Yanping N. Rd.

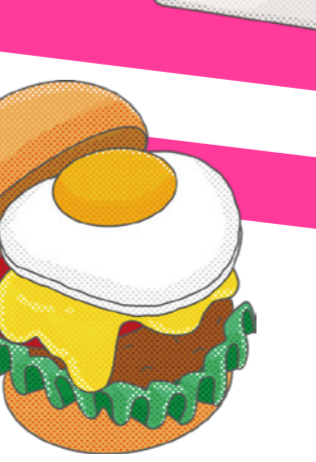
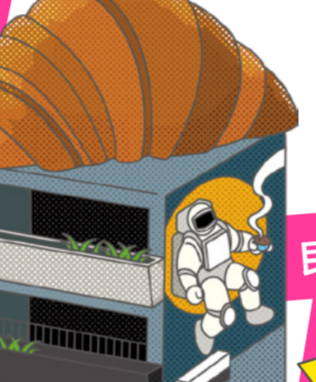


長安西路 Chang'an W. Rd.

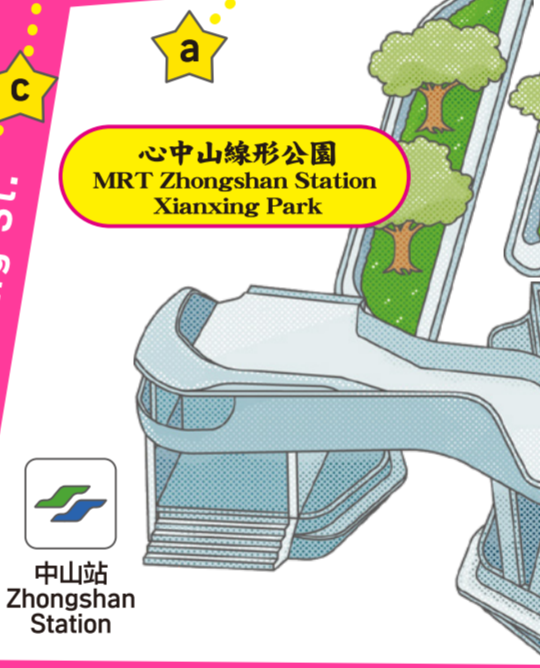
重慶北路二段Sec. 2, Chongqing N. Rd.



承德路Sec. 2, Chengde Rd.



民生西路 Minsheng W. Rd.



中山北二段 Sec. 2, Zhongshan N. Rd.



### 路線 ① | 雙連 & 赤峰街區 半日散策

Shuanglian & Chifeng Street Area Half-Day Stroll

輕鬆度：★★★★★ Ease: ★★★★★  
 時髦度：★★★★★ Vibes: ★★★★★  
 時間：10:00 - 15:00 (約 5 小時) Time: 10:00 AM - 3:00 PM (about 5 hours)

**a** 雙連市場 & 双福食品  
Shuanglian Market & Shuangfu Foods  
 ◎台北市大同區民生西路 152 號  
No. 152, Minsheng W. Rd., Datong Dist., Taipei City  
 體驗為臺灣早市的熱鬧並參訪著名的文昌廟，再帶一些台式三明治當伴手禮。  
Start your day by immersing yourself in the bustling morning market atmosphere and visiting the famous Wenchang Temple. Don't forget to grab some Taiwanese sandwiches too!

**b** 阿德雷德咖啡  
Adelaide Coffee  
 ◎台北市中山區錦州街 4 巷 3 號  
No. 3, Ln. 4, Jinzhou St., Zhongshan Dist., Taipei City  
 提供道地澳式 & 手沖咖啡。  
Enjoy authentic Australian-style coffee and pour-over brews in a cozy setting.

**c** Supranormal Bakery Café  
 ◎台北市大同區赤峰街 71 巷 27 號  
No. 27, Lane 71, Chifeng Street, Datong District, Taipei City

**d** 舊目立屋  
Bo Good Lifehouse  
 ◎台北市大同區赤峰街 49 巷 2 號 1 樓之 4  
Rm. 4, 1F., No. 2, Ln. 49, Chifeng St., Datong Dist., Taipei City  
 日式杯盤器皿選品店。  
Taiwan-Japan fusion style tableware and crockery shop.

**e** PAR STORE  
 ◎台北市大同區赤峰街 3 巷 1 號  
No. 1, Ln. 3, Chihfong St., Datong Dist., Taipei City  
 富品味的服飾小誌選品店，身兼小型音樂展演場地。  
Stylish boutique featuring curated fashion goods and a small music venue.

**f** A · PRANK : DOLLY  
 ◎台北市大同區赤峰街 3 巷 7 號 1 樓  
1F., No. 7, Ln. 3, Chifeng St., Zhongshan Dist., Taipei City  
 蒐集來自各國的珍藏古著。  
Discover rare vintage clothing from around the world.

**g** 誠品書店南西店  
eslite bookstore  
 ◎台北市中山區南京西路 14 號 5 樓  
5F., No. 14, Nanjing W. Rd., Zhongshan Dist., Taipei City  
 被譽為臺灣文化地標的誠品，南西書店以跨文化閱讀發信地為己任。  
Hailed as a cultural landmark in Taiwan, eslite bookstore is dedicated to cross-cultural reading and discovery.

**Tatsuya** (mentioned in a, b, g)

### 路線 ② | 大稻埕的深「埋」一日探險

Dadaocheng's Deep Dive Day Tour

輕鬆度：★★★ Ease: ★★★  
 歷史深度：★★★★★ Historical Depth: ★★★★★  
 時間：9:00 - 17:00 (約 8 小時) Time: 9:00 AM - 5:00 PM (about 8 hours)

**1** 慈聖宮  
Cisheng Temple  
 ◎台北市大同區保安街 49 巷 17 號  
No. 17, Ln. 49, Dalong St., Datong Dist., Taipei City  
 參訪媽祖廟後立刻品嚐台北市罕見的廟口美食聚落。  
Begin your day with a visit to this Cisheng Temple and then dive into the nearby bustling temple street food scene.

**2** 江記華隆  
Jiang Ji Hua Lung  
 ◎台北市大同區迪化街一段 311 號  
No. 311, Sec. 1, Dihua St., Datong Dist., Taipei City  
 百年老字號肉乾。  
Historical store selling classic Taiwanese meat jerky.

**3** 金吉利香舖 & 香宴  
Jinji Incent & Fragrance  
 ◎台北市大同區安西街 8 號 1 樓  
1F., No. 8, Anxi St., Datong Dist., Taipei City  
 專業的香道材料專門店。  
Professional incense materials and fragrances.

**4** 五方食藏  
TAKEFIVE  
 ◎台北市大同區迪化街一段 202 號  
No. 202, Section 1, Dihua Street, Datong District, Taipei City

**5** 大華行  
Grandma's Kitchen  
 ◎台北市大同區迪化街一段 161 號  
No. 161, Sec. 1, Dihua St., Datong Dist., Taipei City  
 創立於清朝咸豐年間的 160 年老店，販售台灣傳統生活用品以及多樣竹木製品。  
Shop at this 160-year-old store, established during the Qing Dynasty, for traditional Taiwanese household items and bamboo products.

**6** 杜甲 A-Ma 香料體驗概念店  
DoGa A-Ma Spice Concept Store  
 ◎台北市大同區迪化街一段 159 號  
No. 159, Sec. 1, Dihua St., Datong Dist., Taipei City  
 台灣首創以製辣為核心。  
Taiwan's first chili-focused spice store.

**7** 永樂市場  
Yongle Fabric Market  
 ◎台北市大同區迪化街一段 21 號  
No. 21, Sec. 1, Dihua St., Datong Dist., Taipei City  
 感受全島最大布市之一的魅力，再探訪周邊美食。  
Feel the charm of one of Taiwan's largest fabric markets and explore the surrounding food stalls.

**Charlene** (mentioned in 6)

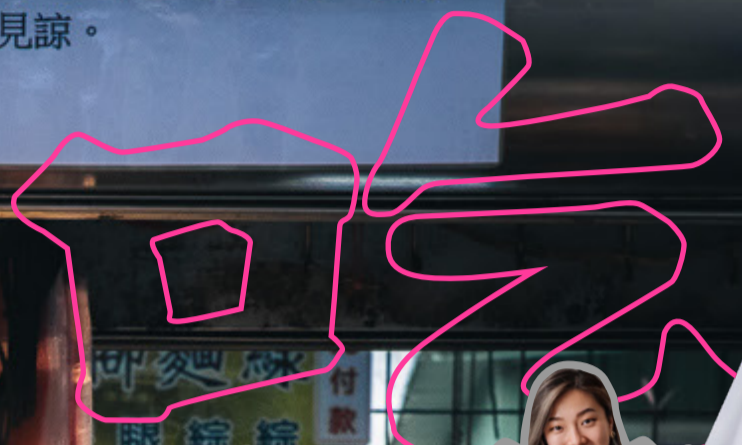
# 地圖使用指南

## How to Use the Map

# eslite spectrum

# NANXI

● 攝影暨設計 | 吳岳軒 Photographer & Graphic Designer | Yue Syuan Wu  
● 插畫暨設計 | 賴佑寧 Illustrator & Graphic Designer | You Ning Lai  
● 編輯 | 楊涵硯 Editor | Lala Yang  
● 特別企劃 | 林佩玗 Special Project Editor | Prairie Lin



日本作家  
Tastsuya



Taipei eater 平台經營者  
Charlene Yang



加碼力推美食景點



美而美

美而美  
三明治  
咖啡牛乳 / 乳茶  
北寧安5巷3號(育達商職對面)  
專線: 777004 · 25773182

豆漿



A guide zine that can unite natives and travelers.